



# Professor Barbara Katz Rothman Welcome to visit UEF/Kuopio Campus

UEF // University of Eastern Finland

April 4, 2019

NEW FUTURE LIFE ACADEMIC  
SOLUTIONS SMART  
INTERDISCIPLINARY WE  
SUSTAIN ENVIRON ACTION  
AIR DIRECTION EDUCATION INTERDISCIPLINARY WATER  
VISION GLOBAL CHALLENGES CLIMATE  
UEF HEALTH

SMART ACADEMIC  
FOCUS GLOBAL CHALLENGES FORESTS SUSTAIN ENVIRON  
MODERN RESEARCH  
UEF OPEN SCIENCE  
ABILITY EDUCATION FOCUS OPENNESS  
SOLUTIONS CLIMATE  
SCIENCE WE INTERACTION  
NEW INNOVATION SOLUTIONS THINK  
FUTURE ECOSYSTEM INTERDISCIPLINARY LIFE  
HEALTH LIFE

FOCUS MODERN WE SCIENCE OPEN SCIENCE SMART FOCUS  
INTERDISCIPLINARY SOLUTIONS NEW  
MODERN OPENNESS ECOSYSTEM DATA UEF  
WE FUTURE OPEN SCIENCE  
SUSTAINABILITY  
UEF  
LIFE INTERACTION  
THINK RESEARCH  
DIGILEARN HEALTH MODERN CLIMATE  
UEF ACADEMIC INTERACTION VISION FOCUS UEF  
INTERDISCIPLINARY FUTURE NEW



UNIVERSITY OF  
EASTERN FINLAND

**ACTION WITH IMPACT. UEF.**

UNIVERSITY OF EASTERN FINLAND  
JOENSUU | KUOPIO

# UEF IN NUMBERS



ARE UEF

4

faculties

*Philosophical Faculty*  
**JOENSUU**

*Faculty of Science and Forestry*  
**JOENSUU | KUOPIO**

*Faculty of Health Sciences*  
**KUOPIO**

*Faculty of Social Sciences  
and Business Studies*  
**JOENSUU | KUOPIO**

13

**FIELDS OF STUDY**  
– the most diverse  
offering in Finland

100

MAJOR SUBJECTS /  
DEGREE PROGRAMMES

2,400

NEW STUDENTS  
EVERY YEAR

2,500

STAFF MEMBERS

15,500

STUDENTS

15,400

ADULT EDUCATION STUDENTS

236 M€

OVERALL FUNDING

1,100

INTERNATIONAL  
DEGREE STUDENTS

3,000

DEGREES AWARDED, OF WHICH 165  
WERE DOCTORAL DEGREES (2017)

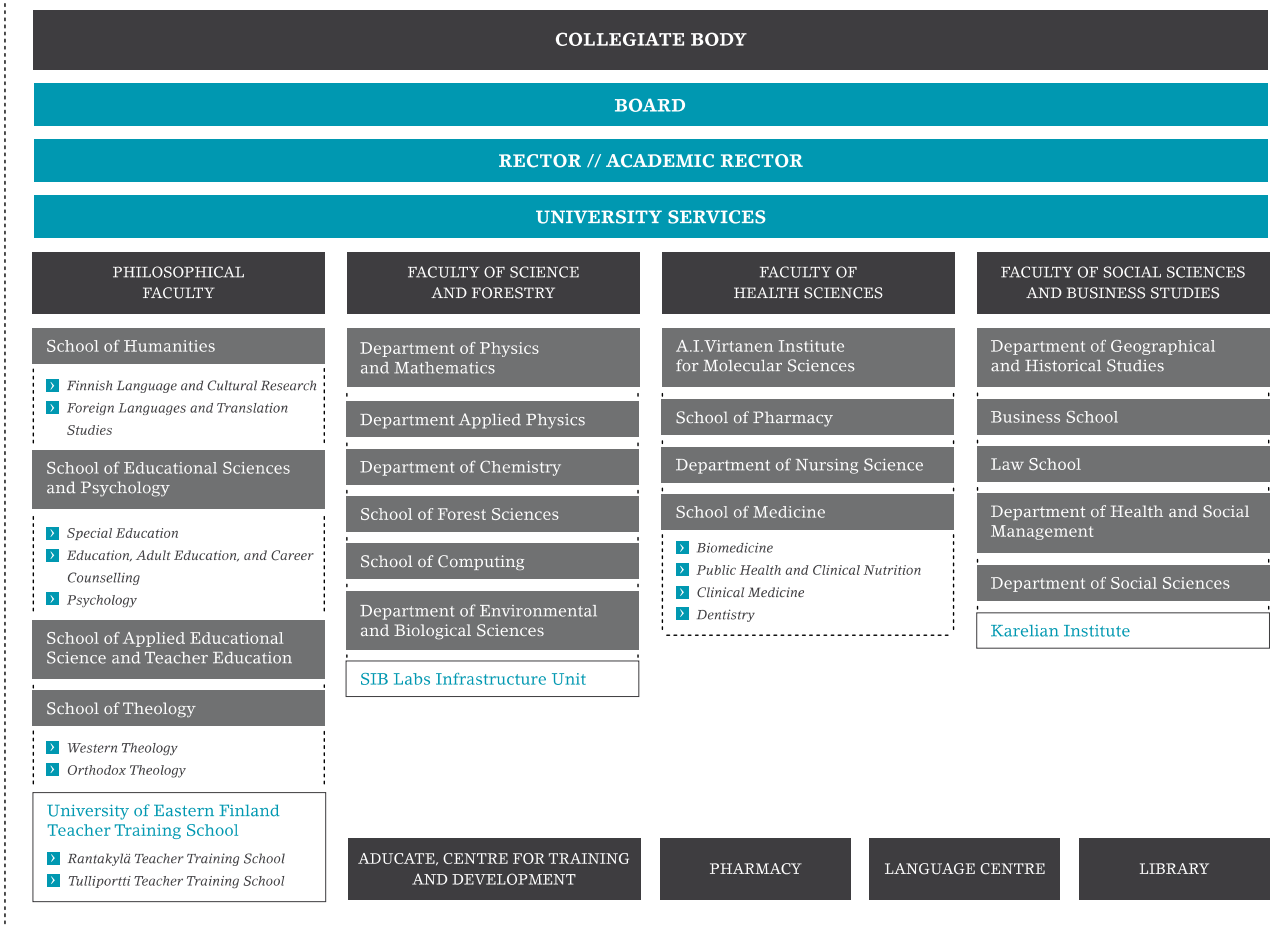
2,600

SCIENTIFIC PUBLICATIONS

300

IN THE TOP 300 IN SEVERAL DISCIPLINE-SPECIFIC  
INTERNATIONAL RANKINGS

## ORGANISATION OF THE UNIVERSITY OF EASTERN FINLAND



*Interdisciplinary encounters  
lead to **action** that is relevant  
today and tomorrow.*

**ACTION WITH IMPACT. UEF.**

# INTERDISCIPLINARY SOLUTIONS. UEF.

» [strategia.uef.fi](https://strategia.uef.fi)



*The University of Eastern Finland is one of the largest universities in Finland. Our research and education constitute the means for creating a responsible and sustainable future.*

*We have identified four global challenges for which we seek solutions through our interdisciplinary research and education.*

# MULTIDISCIPLINARY, RENEWAL-DRIVEN AND INTERNATIONAL RESEARCH



4

*global challenges*

## PROFILE AREAS IN RESEARCH

---



### #HEALTHLIFE

Ageing, lifestyles  
and health

---



### #DIGILEARN

Learning in  
a digitised society

---



### #CULTCHANGE

Cultural encounters,  
mobilities and borders

---



### #SUSTENVIRON

Environmental change and  
sufficiency of natural resources

## FOCUS AREAS IN RESEARCH

---

- > Cardiovascular and metabolic diseases
  - > Neurosciences
  - > Musculoskeletal disorders
  - > Translational cancer research
- 

- > Changes in education
  - > Technology in learning and teaching
  - > Intelligent technologies
- 

- > Cultural encounters
  - > Mobility and society
  - > European borders
- 

- > Forests, global change and bioeconomy
- > Aerosols, climate change and human health
- > Sustainable governance of natural resources



# MULTIDISCIPLINARY, RENEWAL-DRIVEN AND INTERNATIONAL RESEARCH

*Research carried out at the University of Eastern Finland is of a high international standard and has significant impact, with an emphasis on interdisciplinarity.*

*We collaborate with leading universities and research institutes all over the world.*

## 2,600

SCIENTIFIC PUBLICATIONS, OF WHICH 40%  
ARE OPEN ACCESS PUBLICATIONS (2017)



# WE ARE CREATING A NEW TYPE OF UNIVERSITY FOR OUR STUDENTS

» [uef.fi/learning-environments](https://uef.fi/learning-environments)

*Creating better learning environments is one of our main goals.*

*The best academic learning environment in Finland is built around innovative teaching methods, research-based education, diverse use of facilities, transparency and open access.*

*Under the lead of our motivated teachers, we are creating a new culture of teaching. We are renewing our campus facilities with flexibility, inspiration and technology in mind.*

# A STUDENT-CENTRED UNIVERSITY WITH A HIGH-QUALITY LEARNING ENVIRONMENT

# 13

## FIELDS OF STUDY

– the most diverse  
offering in Finland

- > Dentistry
- > Economics and  
business administration
- > Education
- > Forest sciences
- > Health sciences
- > Humanities
- > Law
- > Medicine
- > Natural sciences
- > Pharmacy
- > Psychology
- > Social sciences
- > Theology

# 13,850

BACHELOR'S AND MASTER'S  
DEGREE STUDENTS

# 1,650

DOCTORAL STUDENTS

## THE BEST ACADEMIC LEARNING ENVIRONMENT IN FINLAND IS **CREATED TOGETHER**

- > Teaching always based on the latest research
- > State-of-the-art facilities and technology
- > Teachers' pedagogical expertise
- > Students involved in the development of the learning environment

# A RESPONSIBLE SOCIAL ACTOR

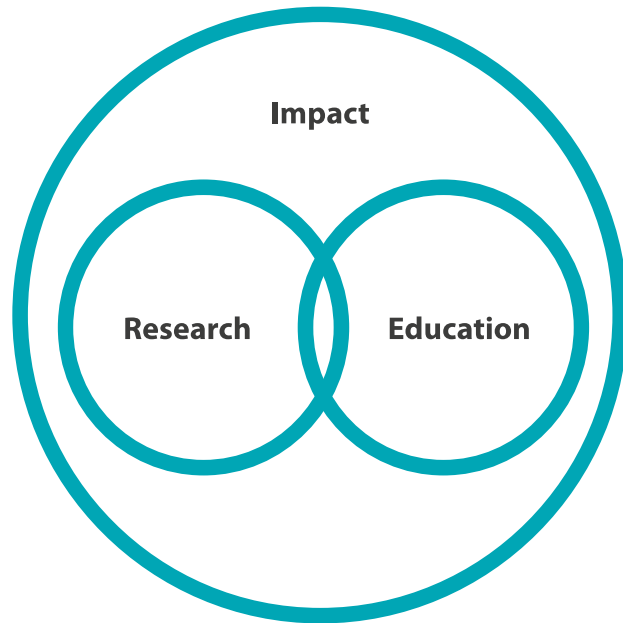


*The University of Eastern Finland is known as a partner who takes the initiative, and as an influential participant in social dialogue.*

*We engage in close cooperation with various research institutes, businesses and industries. Our researchers produce data to*

*support societal decision-making and they participate in the work of several working groups in different fields.*

# RESEARCH & EDUCATION = ACTION WITH IMPACT




- *A builder of open innovation ecosystems*
- *Extensive international relations and networks*
- *Close interaction with companies and other stakeholders operating in our region*
- *Adult education and continuing education offered by the Centre for Training and Development, Aducate*
- *Global and transnational education offered by Finland University Inc.*
- *Scientific events, science activities for children and young people, UEF Ambassadors, alumni network*



UNIVERSITY OF  
EASTERN FINLAND


*uef.fi*


 @UniEastFinland


 itasuomenyliopisto.UEF

 uefvideot

 blogs.uef.fi

 unief

 @unief

 University of Eastern Finland